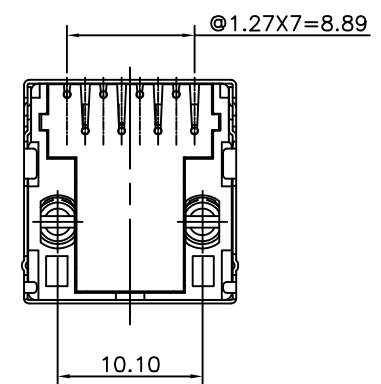
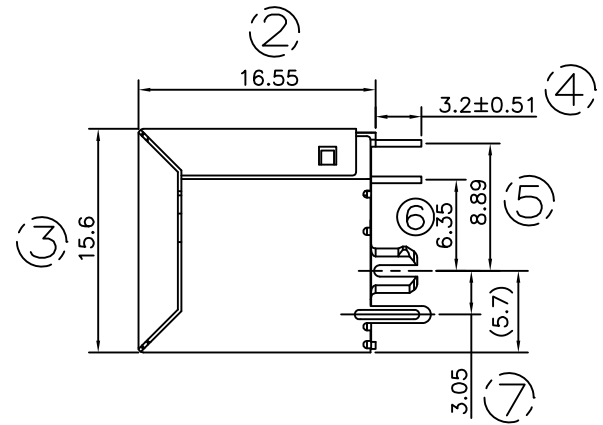
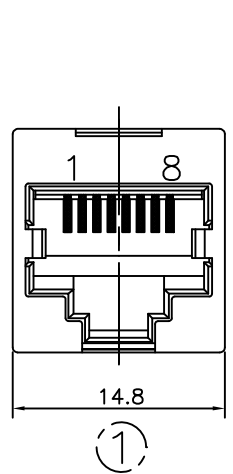




REVISION RECORD 修改紀錄					
REV	ECO	DESCRIPTION	DATE	DRFT	CHKD



**NOTES:**

**ELECTRICAL:**

- VOLTAGE RATING : 125 VAC RMS.
- CURRENT RATING : 1.5 AMP.
- CONTACT RESISTANCE : 30 MILLIOHMS MAX.
- INSULATION RESISTANCE: 1000 MEGOHMS MIN @ 500 VDC.
- DIELECTRIC STRENGTH : 1000 VAC RMS 60Hz, 1MIN.

**MECHANICAL:**

- HOUSING MATERIAL : LCP UL94V-0.
- CONTACT MATERIAL : PHOSPHOR BRONZE  $\phi 0.46\text{mm}$ .
- PLATING : GOLD PLATING OVER NICKEL.
- OPERATING LIFE : 750 CYCLES MIN.
- PCB RETENTION PRE-SOLDER : 1 LB MIN.
- PCB RETENTION POST-SOLDER: 10 LBS MIN.

**ENVIRONMENTAL:**

- STORAGE :  $-40^{\circ}\text{C}$  TO  $+85^{\circ}\text{C}$ .
- OPERATION:  $-40^{\circ}\text{C}$  TO  $+85^{\circ}\text{C}$ .
- WAVE SOLDERING TEMPERATURE:  $250\sim 260^{\circ}\text{C}$ (3~5 SECONDS).
- RoHS COMPLIANT.

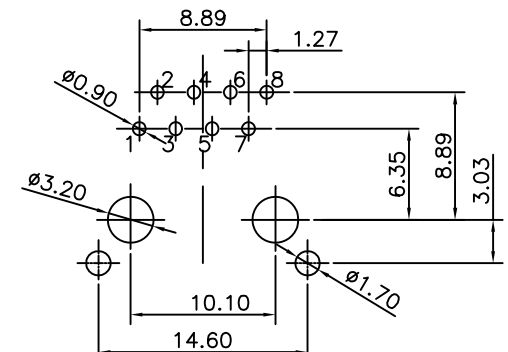
MATES WITH MODULAR PLUG CONFORMING TO  
FCC PART 68, SUBPART F.

CUL FILE NO. E345295

PART NUMBER: EL2288-22XXS1X

1-3u", 2-6u"  
3-15u", 4-30u"  
5-50u" F-GOLD FLASH

01-W/O LOGO,LCP BLACK



PC Board Layout T=1.60mm  
Component Side Shown

單位: mm		DFTO: <b>IRG</b>	DATE: 2017.11.02	<b>ELLAX CORPORATION.</b>	
長度公差	角度公差	CHKD: <b>Allen</b>	DATE: 2017.11.02		
.0±0.25	0°±5°	APPVL: <b>W.B.Huang</b>	DATE: 2017.11.02	TITLE: RJ45 TOP ENTRY PCB MODULAR JACK	
.00±0.15		脫模角:	顏色:	DWG NO.	EL2288-2201S1F
.000±0.10			MATERIAL: 材質	SIZE	REV
		TREAT: 處理		DRAWING NO: 圖檔編號	EL2288-2201S1F_A
		QTY: 數量		PART NO: 零件編號	
		SCALE: 比例	2.5:1		
THIRD ANGLE PROJECTION					1 of 1